



# Sharpening Stone Holder

Project Plan

## Introduction

Thank you for downloading the Sharpening Stone Holder Project Plan from the Glasson Design Studio website. This plan has been developed with specific sharpening stones in mind, however; you should be able to adapt the measurements of the components in the plan to suit your needs.

You will be able to use this plan to construct your own version of the Sharpening Stone Holder.

## Using this plan

This plan is intended to be printed out and used in your shed/workshop as an aid to construction. The plan contains full sized parts that can be used as templates if required.

**NOTE:** This plan is intended to be printed on A3 paper.

## Legal

This plan is licensed under the Creative Commons Attribution-NonCommercial-ShareAlike 4.0 International license - <https://creativecommons.org/licenses/by-nc-sa/4.0/legalcode>.

In simple terms:

- Glasson Design Studio provides this content on an "as-is" basis and offers no guarantees to its accuracy or suitability for your specific purposes;
- Glasson Design Studio is not liable for any damages incurred by you as a result of using this content;
- You can use or reproduce this content for non-Commercial purposes provided that the terms of the licence are met;
- You can modify and share this content for non-Commercial purposes provided that the terms of the licence are met;

## Overview

The design of the Sharpening Stone Holder is fairly straight forward and uses common design patterns to help simplify the construction of the holder. The stone holder is designed to suit the stones used by Glasson Design Studio; however, you should find that adapting the design to suit your stones is trivial. We only use two stones in our sharpening process – a course stone, and a fine stone. Regular honing on the fine stone should keep your tools sharp and reduce the number of times that you need to go back to the course stone.

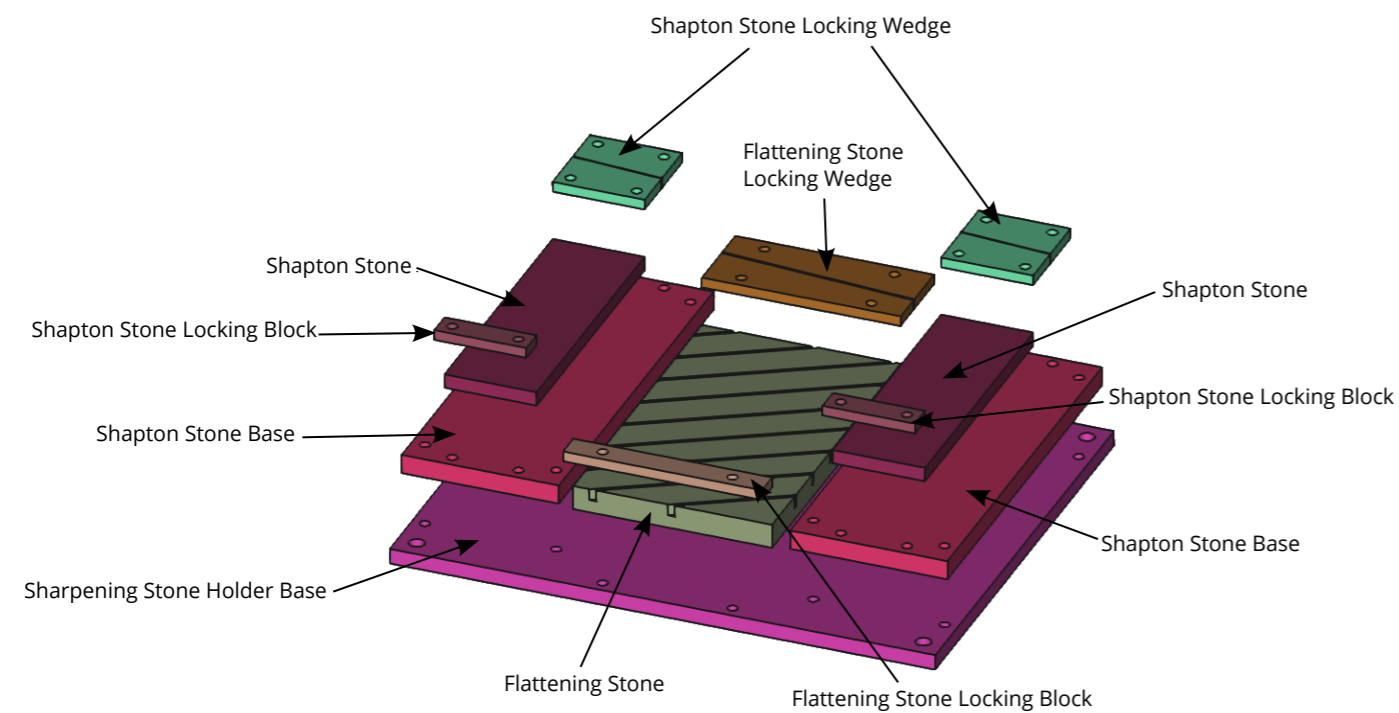


Figure 1: Exploded view of the sharpening stone holder

The sharpening stones are raised above the flattening stone so that you can work the backs of chisels and plane blades without worrying about striking your knuckles on the flattening stone. The stones are held in place by wedges which allow them to be easily inserted or removed as required.

### Warning

Due to the brittle nature of most typical sharpening stones, finger pressure should be used to insert the wedges to prevent damage to the stone.

## Stones used in the design

This sharpening stone holder is designed around the following stones. You will need to adapt the design if you are using different stones.

- Shapton Professional Sharpening Stone - #1000;
- Shapton Professional Sharpening Stone - #8000;
- Pride Abrasives Waterstone Flattening Stone - 320grit Large;

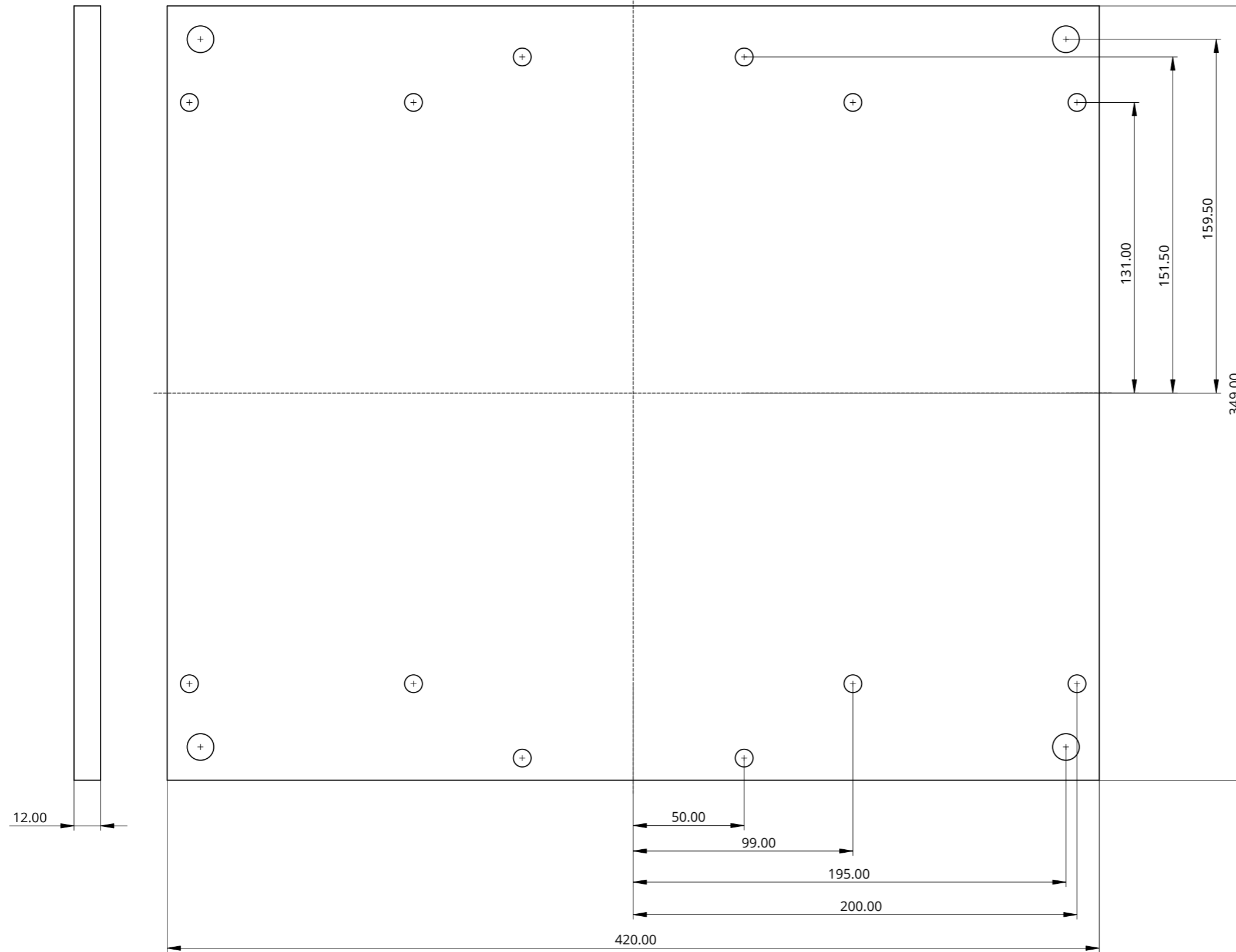
## General Construction Notes

- We used dowels in our design because we believe that they produce stronger joints in MDF than screws do. You can use screws instead if you wish, simply drill a countersunk hole for the screws instead of dowels;
- The materials listed below are what we used to construct our Sharpening Stone Holder. You should make appropriate substitutions to suit the materials that are available to you;
- Use a backing board when drilling the dowel holes to ensure that there is no blow out on the back side of the part being drilled;

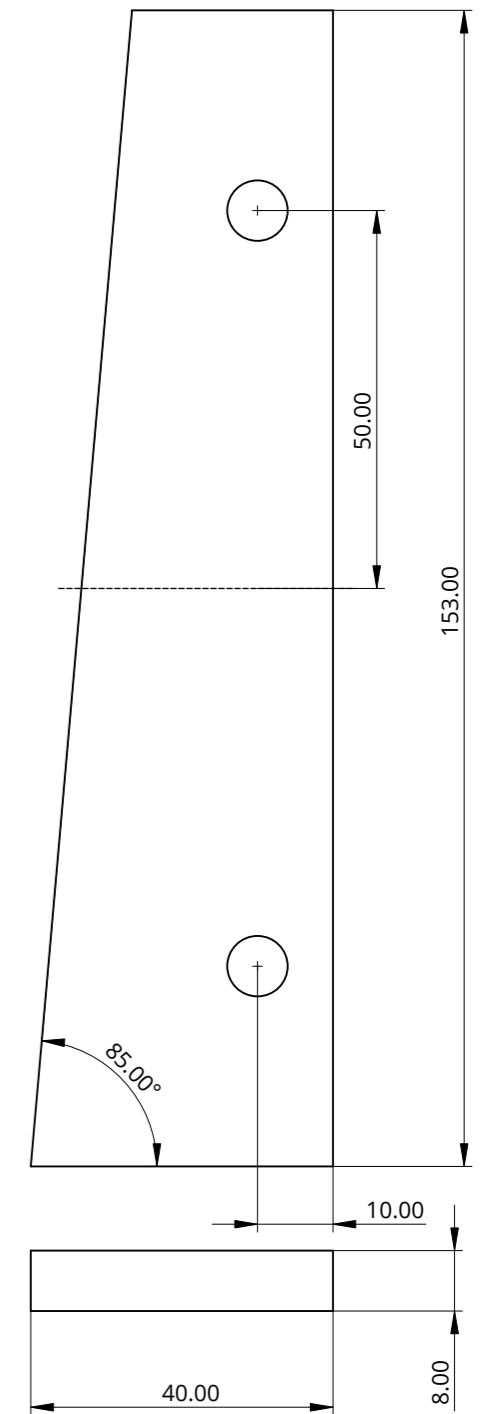
## Materials Used

- 1200 x 600 x 18mm MDF (or plywood) project panel: 1 piece;
- 400 x 80 x 8mm hardwood: 1 piece;
- 8mm dowel: 20 pieces;
- 12mm dowel: 4 pieces;

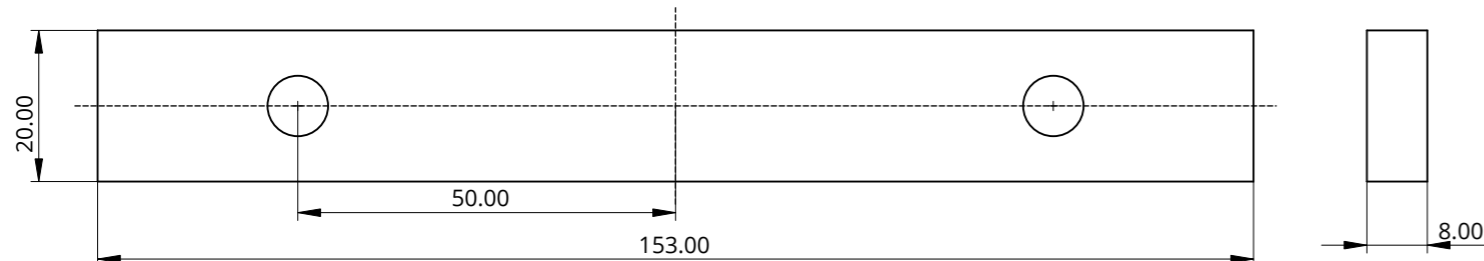
**Base**



**End Wedge**



**End Block**



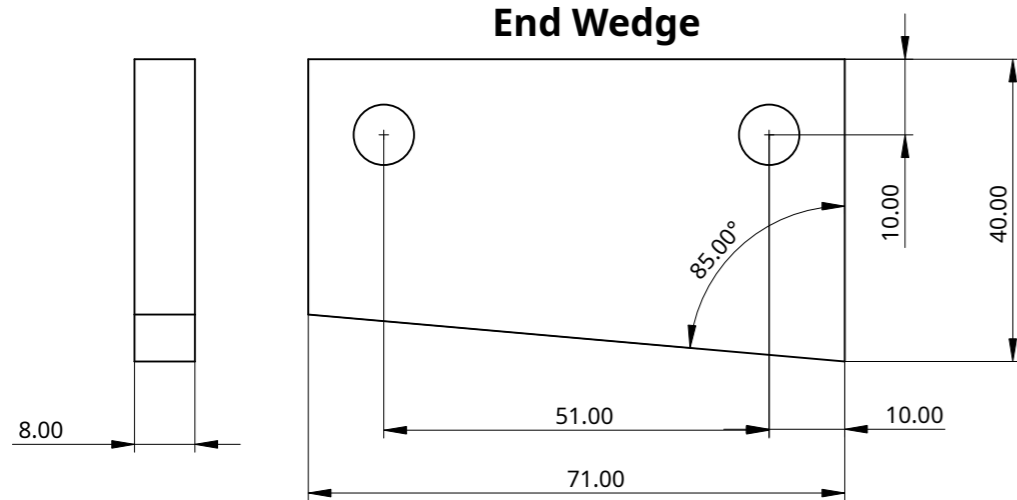
Title: Base Parts		Drawn By: Glasson Design Studio	
Additional Information: FreeCAD Drawing		Scale: 1:1	Revision: A
		Date: 22-Jan-22	



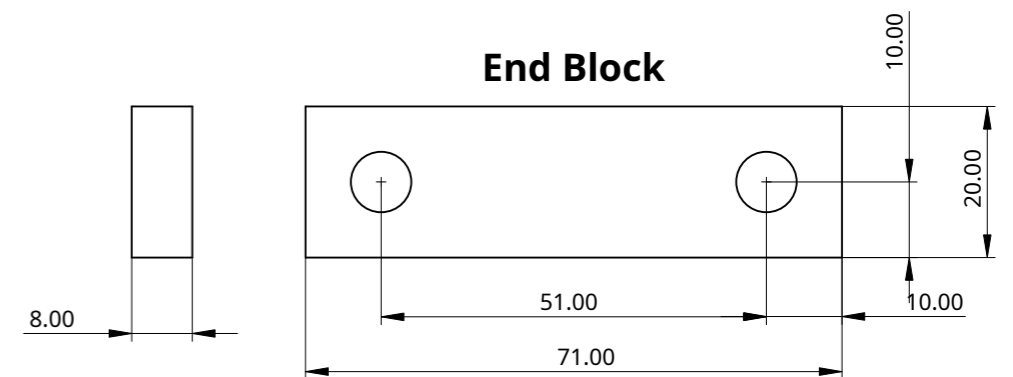
**Base**



**End Wedge**



**End Block**



**Title:** Shapton Stone Holder Parts **Drawn By:** Glasson Design Studio

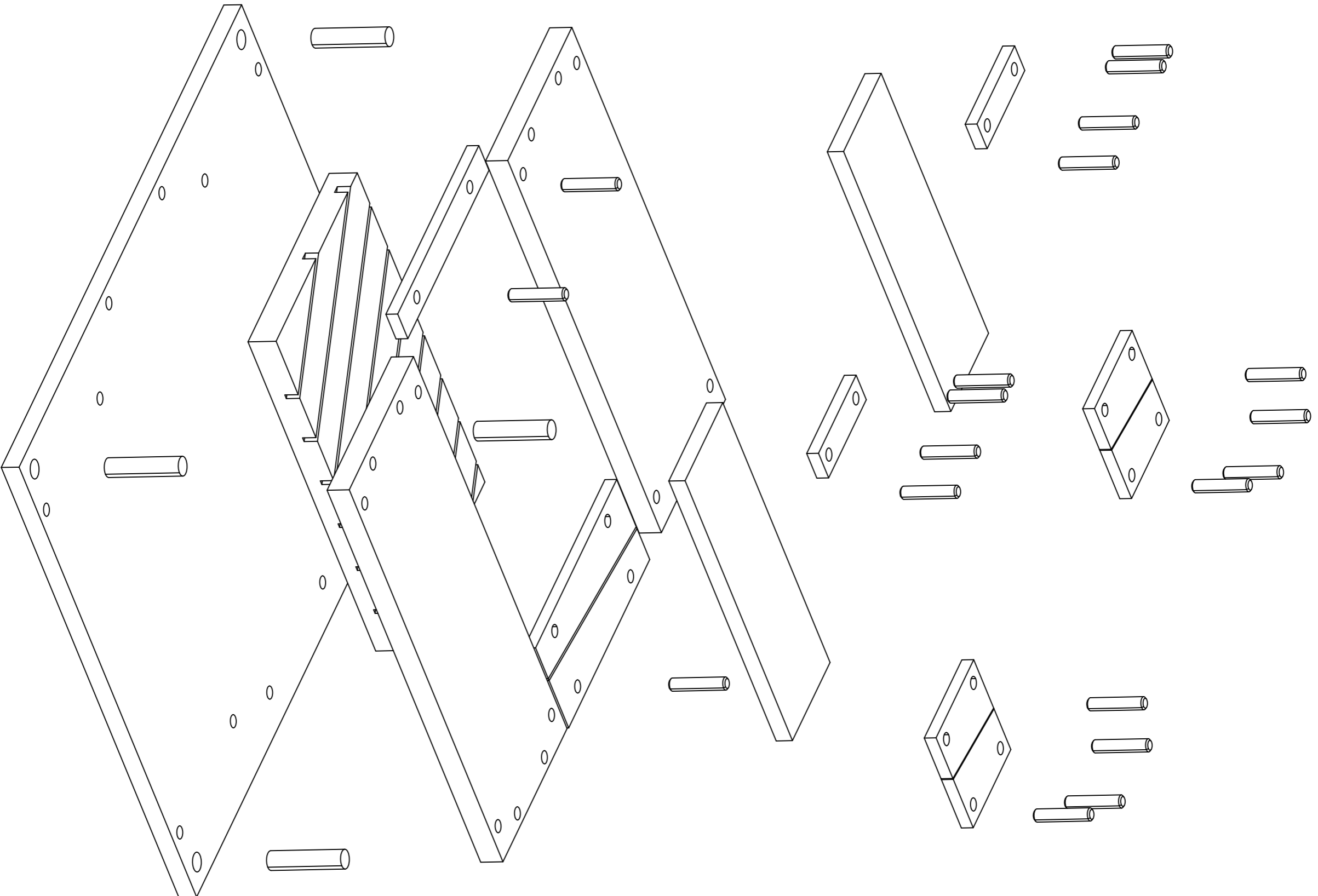
**Additional Information:**  
FreeCAD Drawing



**Scale:** 1:1

**Revision:** A

**Date:** 22-Jan-22



Title: Assembly

Drawn By: Glasson Design Studio

Additional Information:

Sharpening Stone Holder

Scale: 1:1

Revision: A

Date: 22 Jan 22

